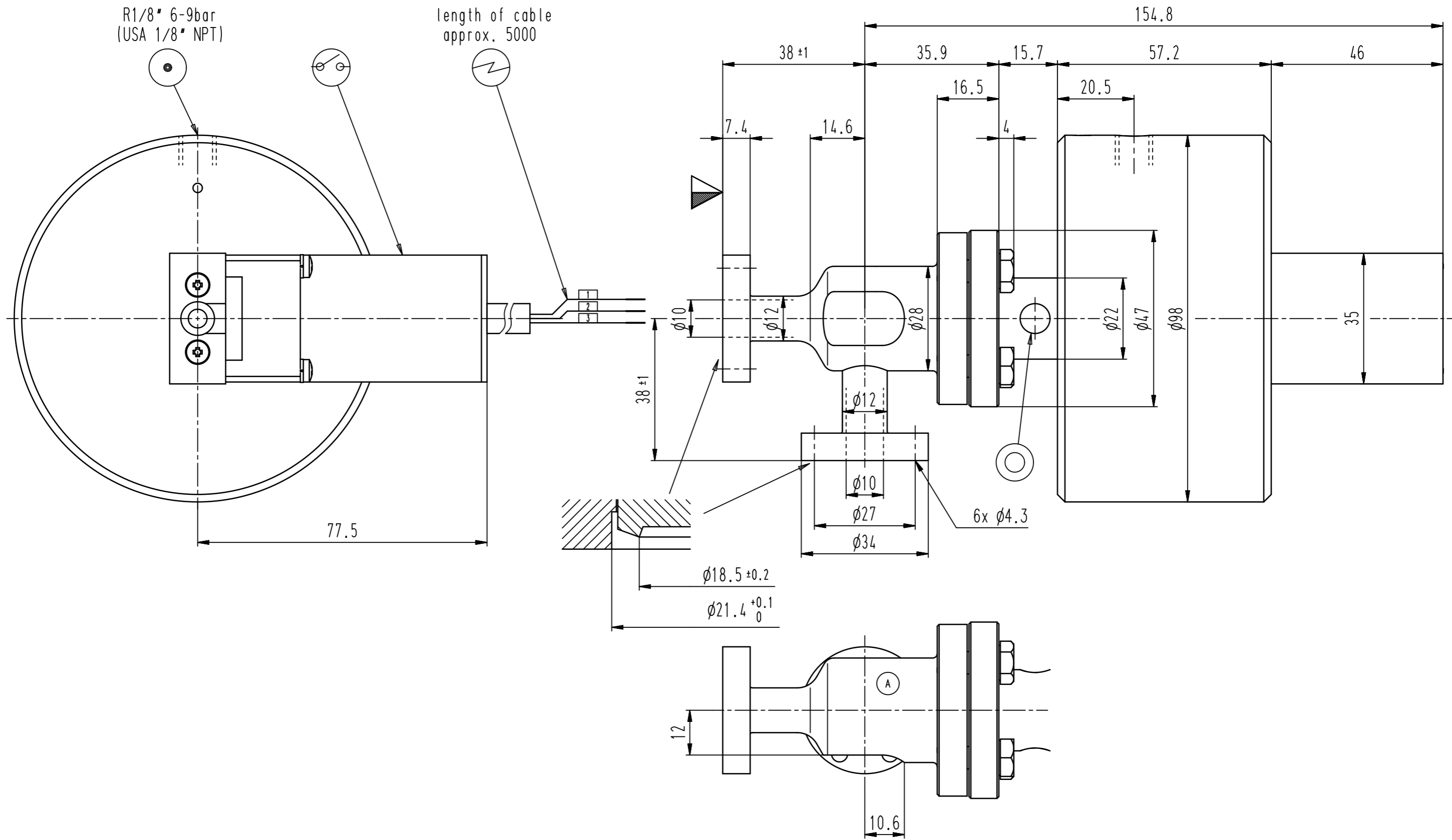


This drawing is the property of VAT.

Revision

Customer number



- ▼ Seat side
- ⊙ Comp. air connection
- ⊙ Electrical connection
- ⊙ Leak detection port
- ⊙ Mech. pos. indication
- ⊙ Position indicator
- ⊙ Required for dismantling
- ⊙ Emergency actuation
- ⊙ For attachment
- ⊙ Bake-out area
- ⊙ Differential pumping port

All-metal angle valve

flange CF-R 16 with borehole position indicator 200°C position
"open" cable connection length (m)= 5.0



VAT Vakuumentile AG
CH-9469 Haag, Switzerland
Tel ++41 81 7716161 Fax ++41 81 7714830

Date: 26.01.05
Name: LBR

Series	571	Ordering No.	57120-XE21-ABF2
Projection E	DN	Flange	X
	10		
Dimensional Drawing	258409	Rev.	A