



VAT Vakuumventile AG
CH-9469 Haag, Schweiz

Product data sheet

Beam Stopper, Series 79, DN 63 (ID 2,5")

OSL-Article No. 79036-CE44-0003

Description

Flange	DN 63 CF-F
Actuator	pneumatic double acting, with position indicator , with solenoid
Feedthrough	bellows

Technical data

Leak rate	
- To the outside	$< 5 \cdot 10^{-10}$ mbar ls ⁻¹
Pressure range	UHV to 1 bar (abs)
Test pressure	1 bar
Cycles until first service	$\leq 5'000$
Bake-out temperature	
- body	$\leq 250^{\circ}\text{C}$
- Pneumatic actuator	$\leq 80^{\circ}\text{C}$
- Position indicator	$\leq 80^{\circ}\text{C}$
- Solenoid	$\leq 80^{\circ}\text{C}$
Heating and cooling rate	$\leq 80^{\circ}\text{C h}^{-1}$
Material	
- Body	1.4301, AISI 304
- Flange	1.4301, AISI 304
- Absorber	copper
- Bellows	1.4435, AISI 316 L
Absorber (water cooled)	
- max. beam load $\varnothing < 60\text{mm}$	5 kW
- max. beam load $\varnothing > 60\text{mm}$	6 kW
- max. density	25 W/mm ²
Seal	
- Bonnet	metal
Mounting position	any
Solenoid	
- Voltage	according to P.O.
- Power consumption	2.5 W
Position indicator	
- Contact rating	≤ 50 V AC / DC 1.2A
Radiation resistance	
- Actuator	10 ⁵ Gy (10 ⁷ rad)
- Solenoid	10 ⁴ Gy (10 ⁶ rad)

Created by: Daniel Brandner	Release date: 06.01.2009	Page 1 of 2
Modified by:	Release date:	277480EA



VAT Vakuumventile AG
CH-9469 Haag, Schweiz

Product data sheet

Beam Stopper, Series 79, DN 63 (ID 2,5")

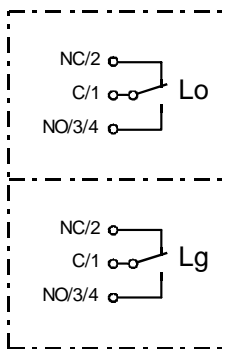
OSL-Article No. 79036-CE44-0003

Compressed air pressure min. - max. (overpressure)	4 - 7 bar / 55 - 100 psig
Volume of air cylinder	0.33l / 0.007 ft ³
Compressed air connection	R 1/8" (USA: 1/8" NPT)
Cooling water	
- min. quantity of cooling water	15 l/min
- max. water temperatur (supply)	15°C
- max. cooling water pressure	8 bar
Cooling water connection	R 1/4" (USA: 1/4" NPT)
Action at power failure	
- beamstopper closed	no change
- beamstopper open	beamstopper closes
Action at compressed air failure	
- beamstopper closed	undefined
- beamstopper open	undefined
Closing time	≤ 1.0 s
Opening time	≤ 1.0 s
Weight	appr. 15 kg / 34 lbs

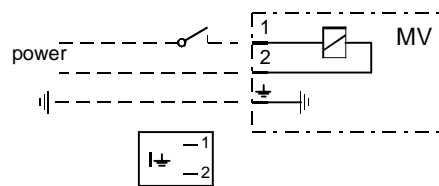
Attachments

Dimensional drawing No. 366176

Wiring diagram



Lo = position indicator «open»
Lg = position indicator «closed»



MV = coil of solenoid

Created by: Daniel Brandner	Release date: 06.01.2009	Page 2 of 2
Modified by:	Release date:	277480EA